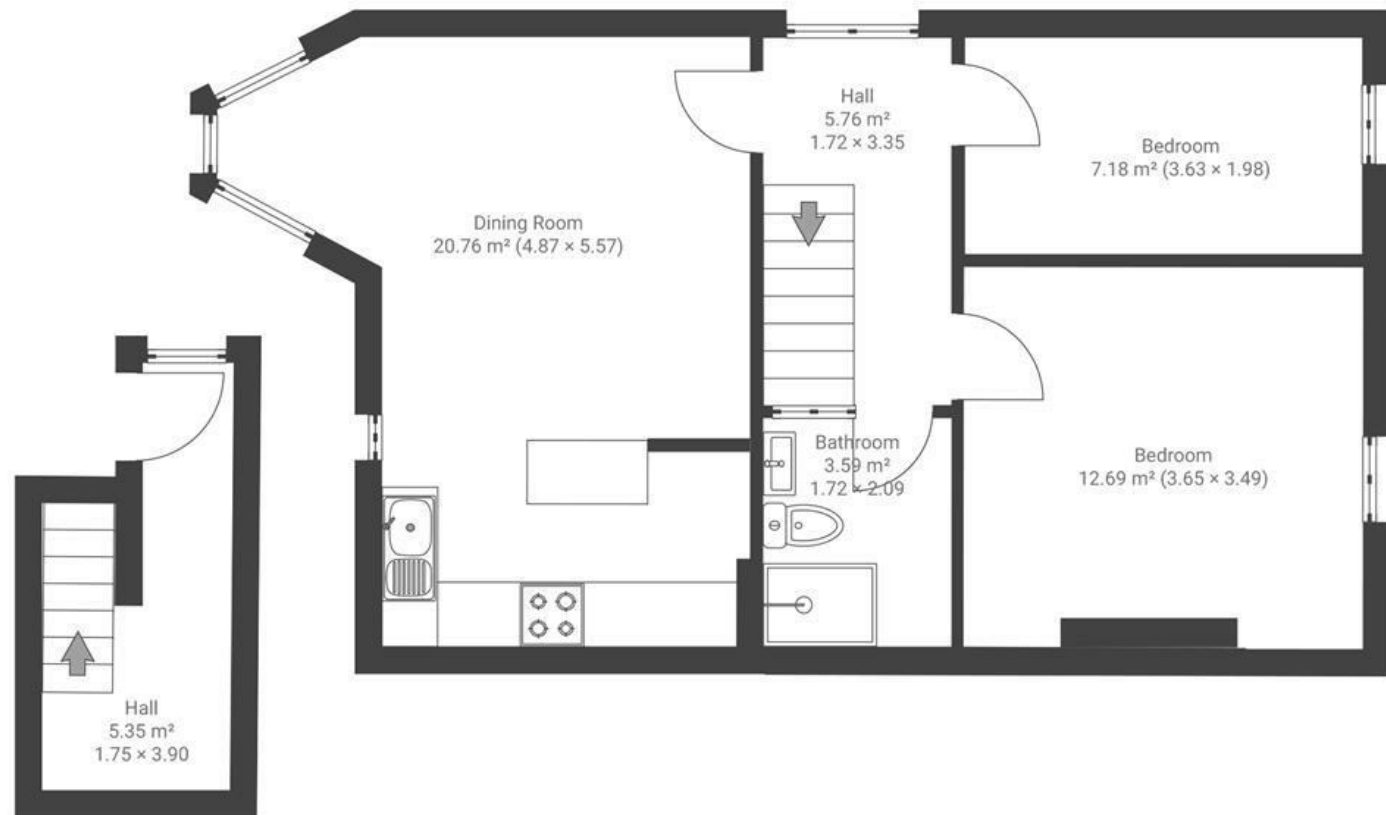


Belmont Road

MONTPELIER

APPROXIMATE FLOOR AREA
57.2 SQM / 615 SQFT



Boardwalk

Belmont Road

MONTPELIER, BRISTOL



£335,000



2 Bedrooms



BS6 5AS



1 Bathrooms

"I will miss the view from the bow window. You can see Cotham, Clifton and Bishopston. Often, while having breakfast I would try to identify landmarks. The light that comes into the living room, particularly around sunset, turns the room golden and I cherish all the moment spent there with my friends. The flat is on the Balloon Fiesta flight path, so during the late afternoon mass flight, you can see the balloons flying very close: it's a view that fills me with happiness every time."

